

**What did you say, so he/she reacts like  
this?**



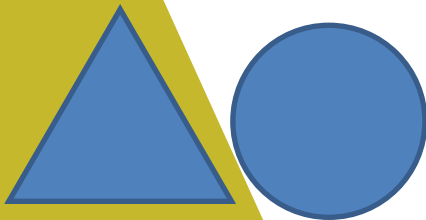
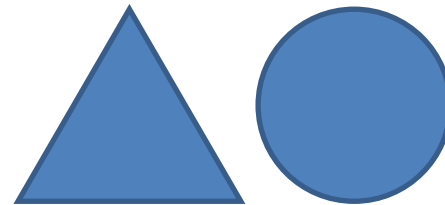
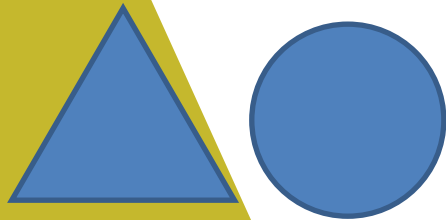
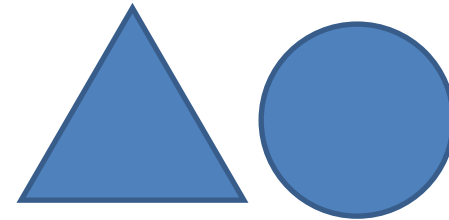
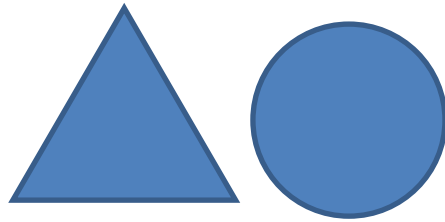
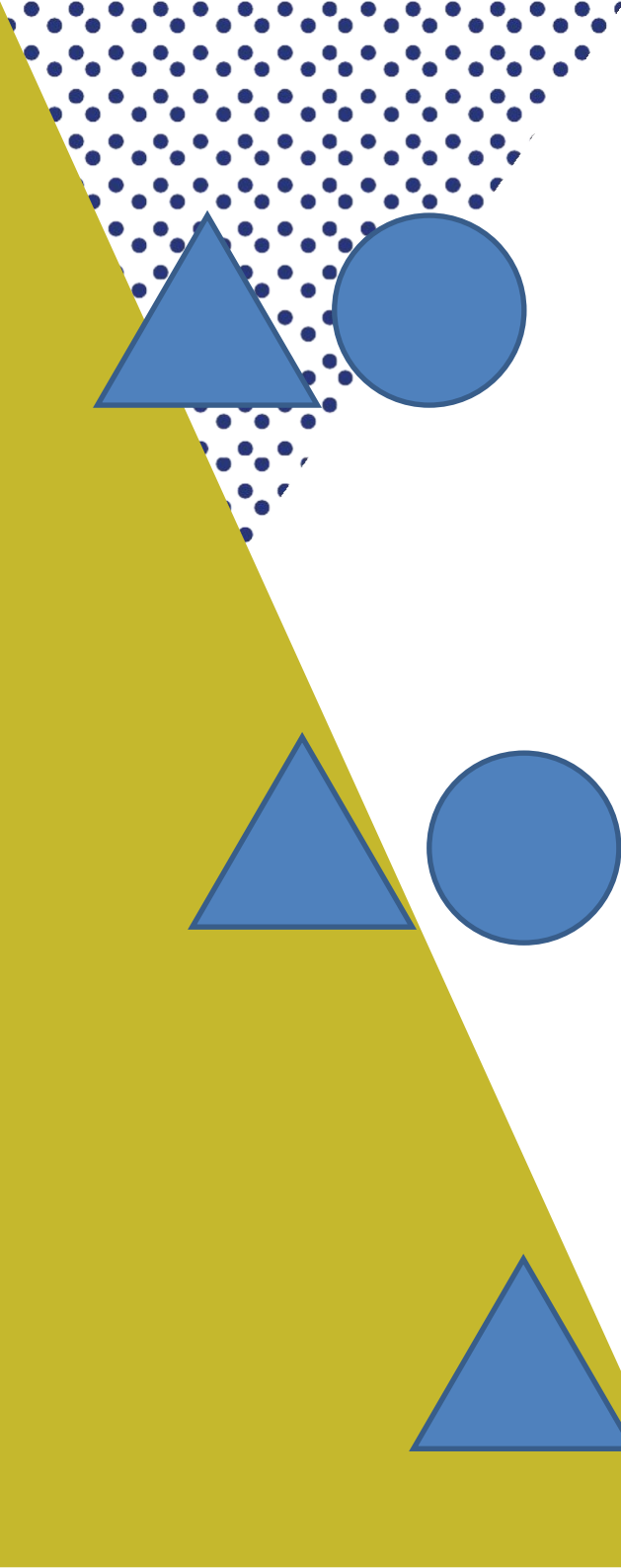
A large yellow triangle is positioned on the left side of the slide, pointing towards the bottom right corner.

How would you describe following slides if

you:

- a) Have theory of mind
- b) Do not have theory of mind





OPPORTUNITIES 4  
**AUTISM**



A large yellow triangle is positioned on the left side of the slide, pointing towards the bottom right corner.

How would you describe following photo if

you:

- a) Have strong central coherence
- b) Have poor central coherence (focus on a bag)





提供/時租/月租/冷氣  
電話: 2385 2122

THICK FAT SPICY CRAB

鴻